



Solid Beech Wood – 2-strip flooring
in our core color selection
Available and affordable



JUNCKERS



SOLIDWOOD
www.solidwood.ph



Beech Natural

The Natural Beech color is bright to light brown colors. Beech is one of the Main hardwood species of northern Europe, and known for its strength and Durability when used indoors.

Also available as sports flooring (FIBA certified)



FILTRA
TIMBER



JUNCKERS
OFFICIAL TECHNICAL SUPPLIER



JUNCKERS Sports Flooring – Natural Beech


JUNCKERS



SOLIDWOOD[®]
www.solidwood.ph



White Beech
For the bright Scandinavian look.

5,392.00


FILTRA
TIMBER




JUNCKERS

SOLIDWOOD[®]
www.solidwood.ph



Twilight Grey

Grey is fashionable for many purposes. It resembles weathered wood look.

6,495.00

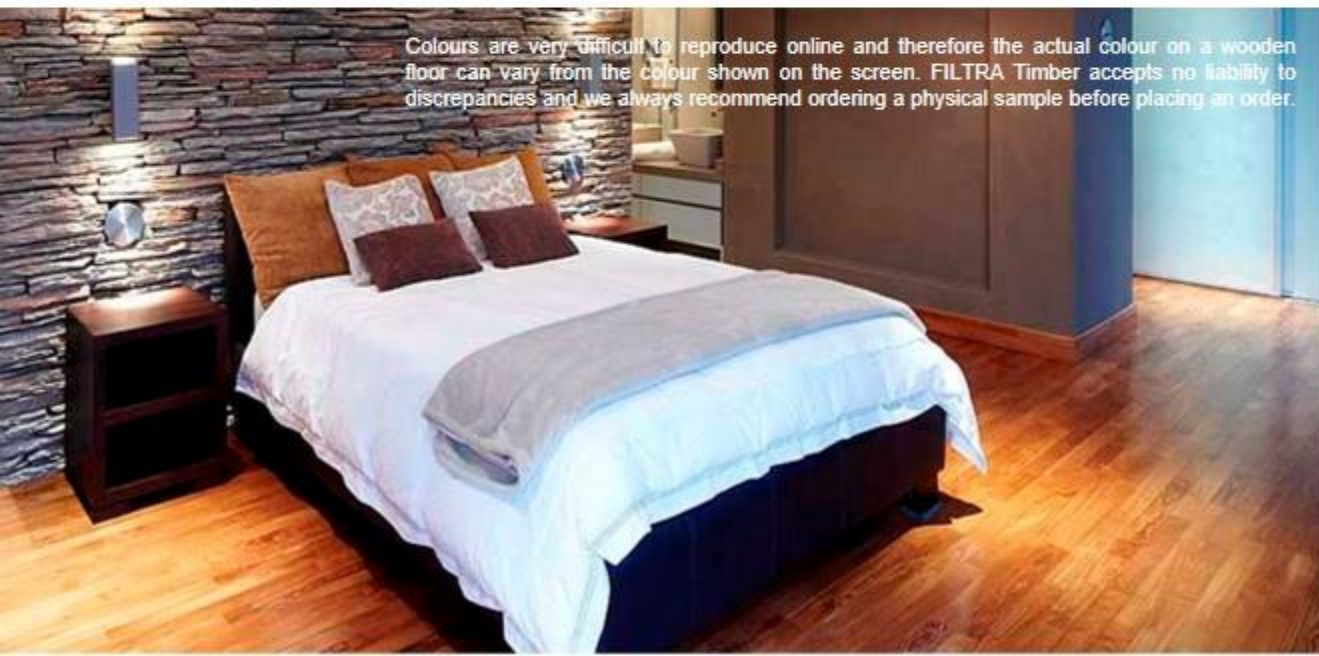

FILTRA
TIMBER



JUNCKERS



SOLIDWOOD[®]
www.solidwood.ph



Colours are very difficult to reproduce online and therefore the actual colour on a wooden floor can vary from the colour shown on the screen. FILTRA Timber accepts no liability to discrepancies and we always recommend ordering a physical sample before placing an order.

Sylvared

This warm "Narra/Teak" like color is created by treating the Beech with Amoniac, which means it will remain the same color through and through, even after several sandings. It comes in Ultra Matt laquered finish

6,372.00



FILTRA
TIMBER



JUNCKERS



SOLIDWOOD[®]
www.solidwood.ph



Dark Coco

The Dark Coco is often used instead of Black Walnut, as it is considerably cheaper and still gives an exclusive and warm look to any interior. Excellent for residential as well as commercial purposes.

5,774.00



FILTRA
TIMBER



JUNCKERS



SOLIDWOOD
www.solidwood.ph



Tender Olive
For the "Wenge" or "Ebony" look

5,013.00



FILTRA
TIMBER


JUNCKERS



Oak Harmony Ultramatt Driftwood Grey
An Oak Plank toned with a light grey colour.

8,325.00




FILTRA
TIMBER

Visit also : www.junckers.com



2 Strip Wooden Flooring



Plank Hardwood Flooring



Herringbone Flooring



Pattern Flooring

Wooden floors

-  [Design your own room](#)
-  [Get inspired from other projects](#)
-  [Useful articles, tips and guides](#)
-  [Technical information](#)





Random lengths.

We often get specifications for 6ft flooring (which is often used for engineered and other non-solid wood solutions), but we prefer to offer "random lengths" which gives a more wholesome wood floor to look at, and also **increases stability.**

Furthermore the random lengths allow full utilization of the trees whereas the fixed lengths has 40-50% waste and thus also higher pricing.

Random lengths is thus cheaper, much more sustainable, and a better choice.



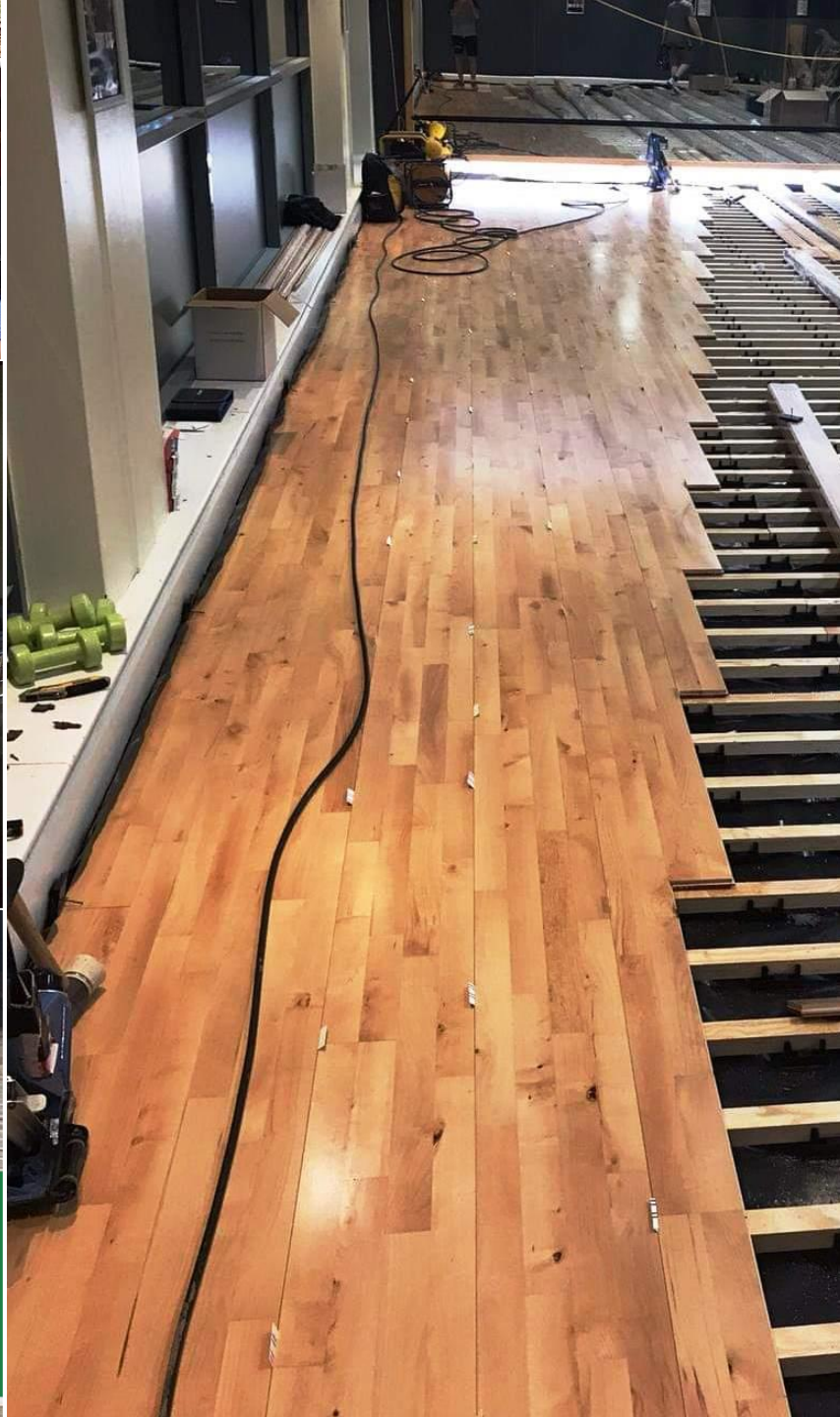
Basketball project in Tacloban, Philippines - 2018



Laserguided sports flooring installation on raised battens. FIBA certified from JUNCKERS, Denmark.

Contact FILTRA Timber for your solid wood flooring requirements:
info@solidwood.ph

www.solidwood.ph – www.junckers.com



Installation
We have our own installation teams who have received the best professional training. We use proper tools including laser to ensure level straightness, and proper nail-guns. We only use top materials.



We to Talk wood!™

SOLIDWOOD®
www.solidwood.ph



FILTRA TIMBER is the trading name for the wood production activities of **Philippine and Scandinavian design, FILTRA inc.** which is our formal name.

Philippine and Scandinavian design, FILTRA Inc.

TIN # : 208-430-211-000

Date and place issued: November 16th, 2000 - Makati City.
SEC Certificate No. A200017268

Office/Warehouse: Patiis Road, Bgy. Guinyang, San Mateo, Rizal
Tel: +632 8570-5750

Showroom: 5/F Yupangco Building 339 Sen. Gil Puyat Ave.
corner N. Garcia Str. Makati City 1209 - Philippines
Tel : +632 8478 6888 | Fax: +632 8478 6688 |

www.filtratimber.com - www.solidwood.ph -
www.facebook.com/filtratimber

